

## 1. Introduction

The DELFOR message is used to exchange information which is normally in the Dutch power sector referred to as:

- E-program: energy plan for next day (or coming days up to 7 days ahead), sent from PRC to SO. E-program SST for Single Sided Transactions is a special case for E-programs using d-updates. A normal E-program is message type 241 (BGM DE1001) with message function 5 (BGM DE1225); E-program for SST is message type E17 with message function 2 (BGM DE1001 and DE1225)
- V-program: acknowledgement of the content of an E-program by the SO, sent to the PRC. A normal V-program has code 5 (BGM, DE1225). If a V-program contains the final approval (flattering) of an E-program the V-program will have code 6 (BGM, DE1225). V-program SST for Single Sided Transactions is a special case for V-programs: use of code E18 in combination with code 2 (addition) in BGM, DE1225 for indicating the use of d-updates.
- T-program: transport prognosis for the next day, sent from a GRU to the GRP.
- Transfer Capacity allocation.

In E- and V-programs the quantities are specified per 15-minute period.

For Transfer capacity allocation on the daily auction and in T-programs the quantities are specified per hour.

For Transfer capacity allocation on the yearly auction the period is a year, for allocation on the monthly auction, the period is a month.

The segment description applies to all use of the DELFOR message in the Dutch power sector. Specific use of a segment or data element in E-, V-, T- or TC-programs is described in the special remarks.

## Overview of the indicators for the use of DELFOR

Below an overview of the various ways DELFOR may be used and the indicators for each type of use are presented.

Information	From	To	Message type BGM	Message function BGM	Reference to previous message	Comment
E-program	PRC	SO	241	5	no	
SST	PRC	SO	E17	2	no	
V-program	SO	PRC	241	5	yes	External inconsistency
V-program	SO	PRC	241	6	yes	Confirmation (fiat)
SST confirmation	SO	PRC	E18	2	yes	Reference to the E-program update from the active party in SST.
T-program	GRU	GRP	241	5	no	
TC-allocation	GRP	PRC	241	5	yes	

### APERAK and E-program scenario

In the message scenario for normal energy schedules (E- and V-program) the APERAK message is used for confirmation/rejection and for giving additional information on external consistency checks by the System Operator. In the SST message scenario APERAK is only used for confirmation/rejection.

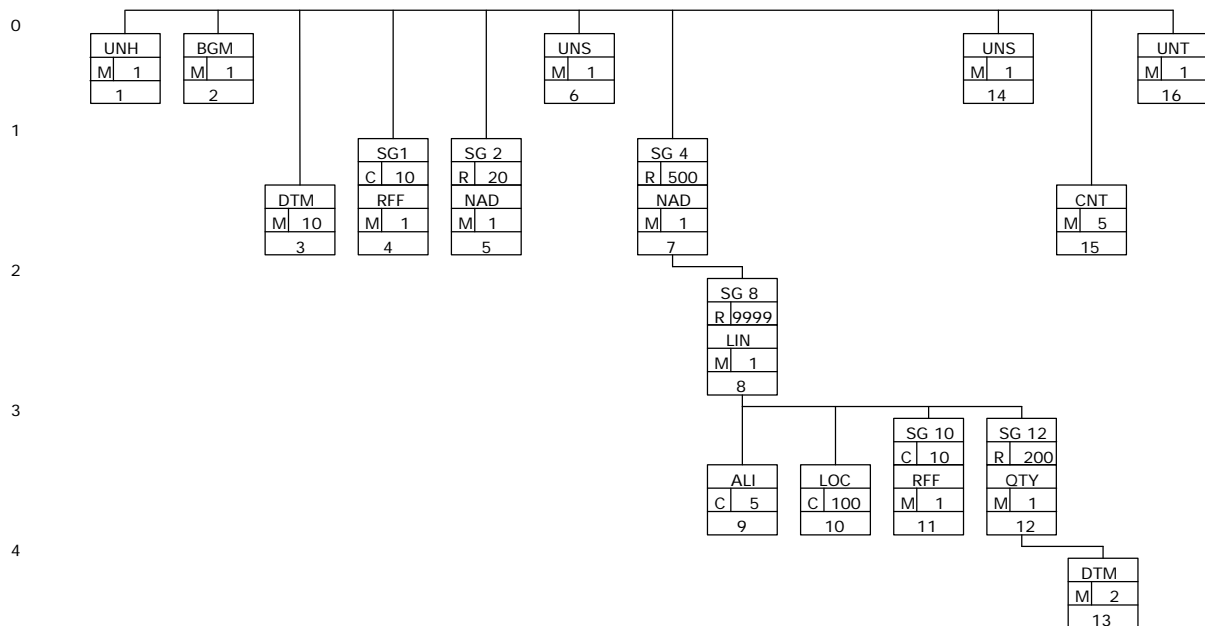
**Updates and versions**

		old	new	clarification	date
Version 1.11					
1.	BGM, DE 1001	241	241 E17 E18	Codes added for Schedule and for Schedule Confirmation	January 2002
2.	BGM, DE 3055		260	Code added for Ediel as the code list responsible agency for codes E17 and E18	January 2002
3.	BGM, DE 3055	N	D	DE is dependent because of the introduction of Ediel-codes in DE1001	January 2002
4.	BGM, DE1225	5 6	2 5 6	Code added for addition (d-update in Schedule Confirmation)	February 2002
5.	example		SST Schedule	Example added	January 2002
6.	examples		SST Confirmation	Examples added	January 2002
7.	SG10, RFF11, DE1153	CT	ALM CT	Code added for reference to E-program of the active party (SST)	February 2002
Version 1.12					
8.					

## 2. Structure of the message

The DELFOR-message can be used in two ways.

1. Location driven: the forecast gives information per location about the different products and their quantities;
  2. Product driven: the forecast gives information per product about the different quantities per location.
- In the power sector in The Netherlands we use the location driven variant.



**3. Segment description**

<b>01 UNH</b>	<b>Message Header</b>	<b>1</b>	<b>M</b>
---------------	-----------------------	----------	----------

Data-element	Type	Description		
0062	Message reference number	an..14	Unique ID for the message, given by the sender	M
S009	MESSAGE IDENTIFIER			M
0065	Message type identifier	an..6	*DELFOR	M
0052	Message type version number	an..3	*D	M
0054	Message type release number	an..3	*96A	M
0051	Controlling agency, coded	an..2	*ZZ	M
0057	Association assigned, coded	an..6	EDINE1	R

**Remarks**

- 0062: This message-ID id given by the EDI-software and can be regarded as a more or less technical message number. The functional message number is to be found in the BGM-segment.
- 0057: EDINE: EDI for the Electricity sector in The Netherlands; version 1

**02 BGM****Beginning of Message****1****M**

Data-element	Type	Description	
C002	DOCUMENT/MESSAGE NAME		
1001	Document/Message Name, coded	an..3	*241 Delivery schedule *E17 Schedule *E18 Schedule Confirmation R
1131	Code list qualifier	an..3	N
3055	Code list responsible agency	an..3	*260 Ediel D
1000	Document message name	an..35	N
1004	DOCUMENT/MESSAGE NUMBER	an..35	Unique ID for the message, given by the sender R
1225	MESSAGE FUNCTION, CODED	an..3	*2 Addition (d-update) *5 Replace of previously sent message *6 Confirmation R
4343	RESPONSE TYPE, CODED	an..3	*AB Message acknowledgement is required *NA No acknowledgement required R

**Remarks**

- general: the various applications of this message (E-, T- and V-program) are to be derived from the information about the sending and receiving parties (NAD05) or from the message type code in DE1001.
- General E-program: a normal E-program will use code 241 (DE1001) in combination with code 5 (DE1225). An E-program with d-update resulting from a Single Sided Transaction will use code E17 (DE1001) in combination with code 2 (DE1225).
- General V-program: a normal E-program will be confirmed by the System Operator by sending a DELFOR-message with all quantities for a 24 hour period. This is a message with message type 241 (DE1001) and message function 6 (DE1225). A confirmation resulting from a Single Sided Transaction will be confirmed by the System Operator by sending a DELFOR-message with values for the d-updates only. This is a message with message type E18 (DE1001 and the additionally required code 260 in DE3055) and message function 2 (DE1225). This confirmation implies the approval ("fiat") of a d-update for an E-program.
- 1001: qualifier 241 is the standard Edifact qualifier for the delivery schedule (DELFOR). The codes E17 and E18 are maintained by Ediel. Ediel codes should always be used in combination with code 260 (DE 3055).
- 3055: qualifier 260 for Ediel as the code list responsible agency for codes in DE1001. The use of this DE is dependent, since it is not to be used in combination with official Edifact codes (like 241) in DE1001.
- 1004: This is the functional message number given by the software application of the sender. This number should consist of a date/time + a serial number (increasing).
- 1225: Qualifier 6 only to be used by SO in case a V-program, also implies the approval ("fiat") of a E-program.
- 1225: Qualifier 2 only to be used in case of a d-update resulting from a Single Sided Transaction.
- 4343: The procedure in the Dutch power sector requires a message acknowledgement for every E-program or update of an E-program. This means, that the use of code AB is default.

<b>03 DTM</b>	<b>Date/time/period</b>	<b>10</b>	<b>M</b>
---------------	-------------------------	-----------	----------

Data-element	Type	Description	
C507	Date/time/period		M
2005	Date/time/period, qualifier	an..3	M
		*137 Message date	
		*163 Start date period	
		*164 End date period	
		* 735 Offset from Co-ordinated Universal Time (UTC)	
2380	Date/time/period	an..35	R
2379	Date/time/period, format qualifier	an..3	R
		*203 CCYYMMDDHHMM	
		*805 Number of hours	

**Remarks**

- Each message should include the message date (date/time of creation of the message)
- Begin and end date refer to the period (24 hours) in which the energy transactions, which will be specified in a more detailed way in following segments, will take place
- In this segment the offset from Co-ordinated Universal Time will be specified as a default value for all other date/time in this message. One UTC-value per message should be used only.

<b>SG1</b>	<b>RFF-DTM</b>	<b>10</b>	<b>C</b>
------------	----------------	-----------	----------

<b>04 RFF</b>	<b>Reference</b>	<b>1</b>	<b>M</b>
---------------	------------------	----------	----------

Data-element	Type	Description	
C506	REFERENCE		M
1153	Reference qualifier	an..3	M
		*AGI Request number (REQDOC)	
		*ATZ Authorisation number	
		*ALM DELFOR (E-program)	
		*BD Bid number	
1154	Reference number	an..35	R
		Reference nr	

**Remarks**

- 1153: In some cases an update to an E-program requires a special request to the SO. Permission to send an update is then accompanied by a special authorisation number issued by the SO. In the update to the E-program reference to this number has to be made.
- 1153: qualifier ATZ is maintained by EAN
- 1153: there is still no regular qualifier available for the reference to a REQDOC. Therefore we use the standard Edifact qualifier for a reference to a request: AGI.
- 1153: Qualifier ALM is to be used by SO when sending a V-program. The reference has to be made to the last consistent E-program.
- 1153: in a TC-program reference to the message number of the original bid (bid number) is included (BD)

<b>SG2</b>	<b>NAD-LOC-SG3</b>	<b>20</b>	<b>R</b>
------------	--------------------	-----------	----------

<b>05 NAD</b>	<b>Name and Address</b>	<b>1</b>	<b>M</b>
---------------	-------------------------	----------	----------

Data-element	Type	Description	
3035 PARTY QUALIFIER	an..3	*SO System Operator *PRC Program Responsible Company *GRP Grid Provider *GRU Grid User	M
C082 PARTY IDENTIFICATION DETAILS			M
3039 Party ID Identification	an..35	EAN Global Location Number (EAN-13)	M
1131 Code List Qualifier	an..3		N
3055 Code list responsible agency	an..3	*9 EAN	R

**Remarks**

- An E-program is always sent to the system operator (SO) by a program responsible company (PRC).
- A T-program is always sent to a grid provider (GRP) by a grid user (GRU).
- A V-program is always sent to a program responsible company (PRC) by the System Operator (SO)
- A TC-program is always sent to a program responsible company (PRC) by the (national) Grid Provider (GRP).
- 3035: the party qualifiers are for the moment still non-standard and therefore maintained by EDINE. These qualifiers are not included in Edifact 96.A. But until within Ediel (or some other standard body) party qualifiers for the power are defined, in The Netherlands these qualifiers will be used.

<b>06 UNS</b>	<b>Section Control</b>	<b>1</b>	<b>M</b>
---------------	------------------------	----------	----------

Data-element	Type	Description	
0081 Section Identification	a1	*D Header/detail section separation	M

**Remarks**

- The use of this segment is mandatory in UN/Edifact.

<b>SG4</b>	<b>NAD-LOC-FTX-SG5-SG6-SG7-SG8</b>	<b>500</b>	<b>C</b>
------------	------------------------------------	------------	----------

<b>07 NAD</b>	<b>Name and Address</b>	<b>1</b>	<b>M</b>
---------------	-------------------------	----------	----------

Data-element	Type	Description	
3035 PARTY QUALIFIER	an..3	*PRC Program responsible company *GC Grid connection	M
C082 PARTY IDENTIFICATION DETAILS			M
3039 Party ID Identification	an..35	EAN Global Location Number (EAN-13) EAN Service relation Number (SRN for grid location, EAN-128)	M
1131 Code List Qualifier	an..3		N
3055 Code list responsible agency	an..3	*9 EAN	R

#### Remarks on the E-, V- and TC-program

- In case of an E- or V-program:
  - SG4 will not be included in case a sender has no planned deliveries with other parties during that day;
  - this segment gives information about the party with whom the sender of the E- program the planned deliveries has agreed upon;
- In case of a TC-program: this segment identifies the foreign counterpart in the energy transaction that has lead to the import- or export and thus to the need for Transfer Capacity.
- A party is identified by an EAN-13 GLN

#### Remarks on the T-program

- This segment gives information about the relevant grid connection. A grid connection is identified by an EAN-128 GSRN.

<b>SG8</b>	<b>LIN-PIA-IMD-MEA-ALI-GIN-GIR- LOC-DTM-FTX-SG9-SG10-SG11- SG12-SG14</b>	<b>9999</b>	<b>R</b>
------------	--	-------------	----------

<b>08 LIN</b>	<b>Line item</b>	<b>1</b>	<b>M</b>
---------------	------------------	----------	----------

Data-element	Type	Description		
1082	Line item number	n..6	Application generated number	R
1229	Action request/notification, coded	an..3	not to be used	N
C212	ITEM NUMBER IDENTIFICATION			D
7140	Item number	an..35		R
7143	Item number type, coded	an..3		R
1131	Code list qualifier	an..3	not to be used	N
3055	Code list responsible agency, coded	an..3	not to be used	N

**Remarks**

General: For now in this message only one product is to be referred to: energy/power. This means that there is no need for specifying a product in these messages. Therefore this segment will only be used in a minimal way. Only DE1082 will be used without using the other DE's. (Only when we start exchanging information on other product like reserve power and reactive power the need for identification of the different products will arise and will be addressed.)

<b>SG8</b>	<b>LIN-PIA-IMD-MEA-ALI-GIN-GIR- LOC-DTM-FTX-SG9-SG10-SG11- SG12-SG14</b>	<b>9999</b>	<b>R</b>
------------	--	-------------	----------

<b>09 ALI</b>	<b>Additional information</b>	<b>5</b>	<b>C</b>
---------------	-------------------------------	----------	----------

Data-element	Type	Description		
3239	COUNTRY OF ORIGIN, CODED	an..3	ISO 3166 two alpha country code	R

**Remarks**

Only to be used in case of an import transaction in the E-program, to identify the country of origin.

<b>SG8</b>	<b>LIN-PIA-IMD-MEA-ALI-GIN-GIR- LOC-DTM-FTX-SG9-SG10-SG11- SG12-SG14</b>	<b>9999</b>	<b>R</b>
------------	--	-------------	----------

<b>10 LOC</b>	<b>Place/location identification</b>	<b>100</b>	<b>C</b>
---------------	--------------------------------------	------------	----------

Data-element	Type	Description	
3227 PLACE/LOCATION QUALIFIER	An..3	*17 Border crossing location *47 Region of destination (sink) *48 Region of production (source)	R
C517 LOCATION IDENTIFICATION			R
3225 Place/location identification	An..25	EAN GSRN (grid location)	R
1131 Code list qualifier	An..3		N
3055 Code list responsible agency	An..3	*9 EAN	R

**Remarks**

To be used in an E-program, in case of an IET-transaction (both import and export) to identify the border crossing location.

To be used in a TC-program to specify the direction of the planned flow of import/export by identifying the grid area where to is imported/exported (sink) and the grid area from where is imported/exported (source).

- 3225: a grid area is identified by an EAN-128 GSRN.
- 3225: a grid location (border crossing location) is identified by an EAN-128 GSRN.

<b>SG8</b>	<b>LIN-PIA-IMD-MEA-ALI-GIN-GIR- LOC-DTM-FTX-SG9-SG10-SG11- SG12-SG14</b>	<b>9999</b>	<b>R</b>
<b>SG10</b>	<b>RFF-DTM</b>	<b>10</b>	<b>C</b>

<b>11 RFF</b>	<b>Reference</b>	<b>1</b>	<b>M</b>
---------------	------------------	----------	----------

Data-element	Type	Description	
C506	REFERENCE		M
1153	Reference qualifier	an..3 *ALM DELFOR (E-program) *CT Contract number	M
1154	Reference number	an..35 Reference nr	R

**Remarks**

- In an E-program only to be used in case of an IET-transaction (both import and export) to specify the Import Export Transit contract number.
- 1154: IET-contract number
- In a TC-program to be used to specify the contract number (assigned by the grid company). This contract number is then later to be used by the PRC in an E-program in case of an IET-transaction (see above).
- In a V-program SST to the in-active party to be used to specify the reference to the E-program SST from the active party.

<b>SG8</b>	<b>LIN-PIA-IMD-MEA-ALI-GIN-GIR- LOC-DTM-FTX-SG9-SG10-SG11- SG12-SG14</b>	<b>9999</b>	<b>R</b>
<b>SG12</b>	<b>QTY-SCC-DTM-SG13</b>	<b>200</b>	<b>R</b>

<b>12 QTY</b>	<b>Quantity</b>	<b>1</b>	<b>M</b>
---------------	-----------------	----------	----------

Data-element	Type	Description	
C186	QUANTITY DETAILS		M
6063	Quantity qualifier	an..3	M
		*26E Forecast quantity	
		*66 Committed quantity	
6060	Quantity	n..15	M
6411	Measure unit qualifier	an..3	M
		*KWH Kilo Watt-hour	
		*KW Kilo Watt	
		*MAW Mega Watt	

**Remarks**

- 6411: The forecast is done in 15-minute periods in E- and V-programs. In T- and TC-programs hourly periods are used.
- 6411: in an E- and V-program the unit qualifier to used is KWH; in a T-program the unit qualifier to be used is KW; in a TC-program the unit qualifier to be used is MAW.
- 6063: In E-,T- and V-programs the qualifier to be used is 26E to indicate a forecast (E- and T-programs) or a confirmation of a forecast (V-program); in a TC-program the qualifier to be used is 66 to indicate the allocation of a quantity.
- 6060: decimals are not to be used in quantity
- 6060: Use of +/- signs:
  - The + sign is not used (regarded as default)
  - In E-, T- and V-programs the signs are used to indicate the direction of the flow (see Functional description).
  - In a TC-program direction is specified by using source and sink area's. Therefore a quantity in a TC-program can only be positive.
- SST: In a V-program to the active party the sign is the same as in his E-program to which this V-program is the response. In the V-program to the inactive party however the sign will be the opposite!

<b>SG8</b>	<b>LIN-PIA-IMD-MEA-ALI-GIN-GIR- LOC-DTM-FTX-SG9-SG10-SG11- SG12-SG14</b>	<b>9999</b>	<b>R</b>
<b>SG12</b>	<b>QTY-SCC-DTM-SG13</b>	<b>200</b>	<b>R</b>

<b>13 DTM</b>	<b>Date/time/period</b>	<b>2</b>	<b>M</b>
---------------	-------------------------	----------	----------

Data-element	Type	Description	
C507	DATE/TIME/PERIOD		M
2005	Date/time/period qualifier	an..3 *163 Start period *164 End period	M
2380	Date/time/period	an..35	R
2379	Date/time/period, format qualifier	an..3 *203 CCYYDDHHMM	R

**Remarks**

- 2005: The period (year, month, hour or 15 minutes) is indicated by stating the starting moment and the end moment

<b>14 UNS</b>	<b>Section control</b>	<b>1</b>	<b>M</b>
---------------	------------------------	----------	----------

Data-element	Type	Description	
0081	Section identification	a1 *S Detail/summary section separation	M

**Remarks**

- The use of this segment is mandatory in UN/Edifact.

<b>15 CNT</b>	<b>Control total</b>	<b>5</b>	<b>M</b>
---------------	----------------------	----------	----------

Data-element	Type	Description	
C270	CONTROL		M
6069	Control qualifier	an..3 *1 Total value of the quantity segments at line level in the message	M
6066	Control value	n..18	M
6411	Measure unit qualifier	an..3 not to be used	O

**Remarks**

- 6066: the result of the sum of all the occurrences of DE 6060 in the QTY-segments in the message; the values added are the real values (with +/- sign). Example: -10 as the first value and 6 as the second value lead to the control total of -4.

**16 UNT****Message trailer****1****M**

Data-element	Type	Description		
0074	Number of segments in the message	n..6	The total number of segments in the message (incl. UNH- and UNT-segments) is detailed here.	M
0062	Message reference number	an..14	The message reference number detailed here should equal the one specified in the UNH-segment	M

**Remarks**

- The use of this segment is mandatory in UN/Edifact.

**Example of an E-program as an EDI DELFOR-message****EDIFACT segments DELFOR-message****Content and clarification  
E-program**

UNH		UNH+NR001+DELFOR:D:96A:ZZ: EDINE1'	EDIFACT-message type (DELFOR version 96A)
BGM		BGM+241+E99041100011+5+AB'	Message number Acknowledgement required
DTM		DTM+137:199904111402:203'	Message date and time
DTM		DTM+163:199904120000:203'	Start time E-program
DTM		DTM+164:199904130000:203'	End time E-program
DTM		DTM+735:2:805'	UTC offset is 2 hours
RFF		RFF+AGI:R99041100025'	Reference to REQDOC from System Operator
NAD		NAD+PRC+871000112345c::9'	Message from Program Responsible Company (PV_A)
NAD		NAD+SO+871234500001c::9'	Message to System Operator From PRC to SO implies E- program
UNS		UNS+D'	Section separator
NAD		NAD+PRC+871000200001c::9'	Contract party (PV_X)
	LIN	LIN+1'	
	QTY	QTY+26E:1482921:KWH'	Quantity in kWh
	DTM	DTM+163:199904120000:203'	Start time period (15 minutes)
	DTM	DTM+164:199904120015:203'	End time period (15 minutes)
	QTY	QTY+26E:1200078:KWH'	Quantity in kWh
	DTM	DTM+163:199904120015:203'	Start time period (15 minutes)
	DTM	DTM+164:199904120030:203'	End time period (15 minutes)
	QTY	QTY+26E:1093889:KWH'	Quantity in kWh
	DTM	DTM+163:199904120030:203'	Start time period (15 minutes)
	DTM	DTM+164:199904120045:203'	End time period (15 minutes)
	QTY	QTY+26E:1061099:KWH'	Quantity in kWh
	DTM	DTM+163:199904120045:203'	Start time period (15 minutes)
	DTM	DTM+164:199904120000:203'	End time period (15 minutes)
	QTY	QTY+26E:1043251:KWH'	Quantity in kWh
	DTM	DTM+163:199904120000:203'	Start time period (15 minutes)
	DTM	DTM+164:199904120115:203'	End time period (15 minutes)
		.....etc etc	
	QTY	QTY+26E:1788611:KWH'	Quantity in kWh
	DTM	DTM+163:199904122345:203'	Start time period (15 minutes)
	DTM	DTM+164:199904130000:203'	End time period (midnight next day)
NAD		NAD+PRC+871000300001c::9'	Next Contract party (PV_Y)
	LIN	LIN+1'	
	QTY	QTY+26E:-121200:KWH'	Quantity in kWh
	DTM	DTM+163:199904120000:203'	Start time period (15 minutes)
	DTM	DTM+164:199904120015:203'	End time period (15 minutes)
	QTY	QTY+26E:-62000:KWH'	Quantity in kWh
	DTM	DTM+163:199904120015:203'	Start time period (15 minutes)
	DTM	DTM+164:199904120030:203'	End time period (15 minutes)
	QTY	QTY+26E:-37500:KWH'	Quantity in kWh

EDIFACT segments DELFOR-message

Content and clarification  
E-program

		DTM	DTM+163:199904120030:203'	Start time period (15 minutes)
		DTM	DTM+164:199904120045:203'	End time period (15 minutes)
	QTY		QTY+26E:-32300:KWH'	Quantity in kWh
		DTM	DTM+163:199904120045:203'	Start time period (15 minutes)
		DTM	DTM+164:199904120100:203'	End time period (15 minutes)
	QTY		QTY+26E:-20700:KWH'	Quantity in kWh
		DTM	DTM+163:199904120100:203'	Start time period (15 minutes)
		DTM	DTM+164:199904120115:203'	End time period (15 minutes)
			.....etc etc	
	QTY		QTY+26E:-123000:KWH'	Quantity in kWh
		DTM	DTM+163:199904122345:203'	Start time period (15 minutes)
		DTM	DTM+164:199904130000:203'	End time period (midnight next day)
NAD			NAD+PRC+871000400001c::9'	Contract party (PV_Z)
	LIN		LIN+1'	
		QTY	QTY+26E:-50363:KWH'	Quantity in kWh
		DTM	DTM+163:199904120000:203'	Start time period (15 minutes)
		DTM	DTM+164:199904120015:203'	End time period (15 minutes)
	QTY		QTY+26E:-44846:KWH'	Quantity in kWh
		DTM	DTM+163:199904120015:203'	Start time period (15 minutes)
		DTM	DTM+164:199904120030:203'	End time period (15 minutes)
	QTY		QTY+26E:-42269:KWH'	Quantity in kWh
		DTM	DTM+163:199904120030:203'	Start time period (15 minutes)
		DTM	DTM+164:199904120045:203'	End time period (15 minutes)
	QTY		QTY+26E:-41977:KWH'	Quantity in kWh
		DTM	DTM+163:199904120045:203'	Start time period (15 minutes)
		DTM	DTM+164:199904120100:203'	End time period (15 minutes)
	QTY		QTY+26E:-42757:KWH'	Quantity in kWh
		DTM	DTM+163:199904120100:203'	Start time period (15 minutes)
		DTM	DTM+164:199904120115:203'	End time period (15 minutes)
			.....etc etc	
	QTY		QTY+26E:-50803:KWH'	Quantity in kWh
		DTM	DTM+163:199904122345:203'	Start time period (15 minutes)
		DTM	DTM+164:199904130000:203'	End time period (midnight next day)
				Following segments represent an IET specification
NAD			NAD+PRC+544000100001c::9'	Foreign contract partner / buyer (FP_A)
	LIN		LIN+1'	
		LOC	LOC+17+871234500000000001c::9'	Note that ALL segment is not used, because of exports
		RFF	RFF+CT:E001'	Border station BE-ZVL
		QTY	QTY+26E:-30900:KWH'	IET contract number
				Quantity in kWh
		DTM	DTM+163:199904120000:203'	Start time period (15 minutes)
		DTM	DTM+164:199904120015:203'	End time period (15 minutes)
	QTY		QTY+26E:-37300:KWH'	Quantity in kWh
		DTM	DTM+163:199904120015:203'	Start time period (15 minutes)
		DTM	DTM+164:199904120030:203'	End time period (15 minutes)
	QTY		QTY+26E:-41100:KWH'	Quantity in kWh
		DTM	DTM+163:199904120030:203'	Start time period (15 minutes)
		DTM	DTM+164:199904120045:203'	End time period (15 minutes)
	QTY		QTY+26E:-43600:KWH'	Quantity in kWh

## EDIFACT segments DELFOR-message

Content and clarification  
E-program

	DTM	DTM+163:199904120045:203'	Start time period (15 minutes)
	DTM	DTM+164:199904120100:203'	End time period (15 minutes)
QTY		QTY+26E:-43600:KWH'	Quantity in kWh
	DTM	DTM+163:199904120100:203'	Start time period (15 minutes)
	DTM	DTM+164:199904120115:203'	End time period (15 minutes)
		.....etc etc	
QTY		QTY+26E:-29000:KWH'	Quantity in kWh
	DTM	DTM+163:199904122345:203'	Start time period (15 minutes)
	DTM	DTM+164:199904130000:203'	End time period (midnight next day)
NAD		NAD+PRC+403000100001c::9'	Foreign contract party / supplier (FP_B)
LIN		LIN+1'	
ALI		ALI+DE'	Country of origin (Germany)
LOC		LOC+17+87123450000000011c::9'	Border station DE-MBT
RFF		RFF+CT:I001	IET contract number
QTY		QTY+26E:132700:KWH'	Quantity in kWh
	DTM	DTM+163:199904120000:203'	Start time period (15 minutes)
	DTM	DTM+164:199904120015:203'	End time period (15 minutes)
QTY		QTY+26E:105300:KWH'	Quantity in kWh
	DTM	DTM+163:199904120015:203'	Start time period (15 minutes)
	DTM	DTM+164:199904120030:203'	End time period (15 minutes)
QTY		QTY+26E:88600:KWH'	Quantity in kWh
	DTM	DTM+163:199904120030:203'	Start time period (15 minutes)
	DTM	DTM+164:199904120045:203'	End time period (15 minutes)
QTY		QTY+26E:77900:KWH'	Quantity in kWh
	DTM	DTM+163:199904120045:203'	Start time period (15 minutes)
	DTM	DTM+164:199904120100:203'	End time period (15 minutes)
QTY		QTY+26E:77900:KWH'	Quantity in kWh
	DTM	DTM+163:199904120100:203'	Start time period (15 minutes)
	DTM	DTM+164:199904120115:203'	End time period (15 minutes)
		.....etc etc	
QTY		QTY+26E:139700:KWH'	Quantity in kWh
	DTM	DTM+163:199904122345:203'	Start time period (15 minutes)
	DTM	DTM+164:199904130000:203'	End time period (midnight next day)
UNS		UNS+S'	Section separator
CNT		CNT+1:-53922198'	Checksum (total of all quantity values) <sup>1</sup>
UNT		UNT+208+NR001'	Checksum (number of segments in message including UNH en UNT)

<sup>1</sup> In the examples to the MIG's all checksums are to be regarded as imaginary numbers and not as an exact count of numbers or values in the example.

**Example of the transition to wintertime in an E-program as an EDI  
DELFOR-message**

**EDIFACT segments DELFOR-message**

**Content and clarification  
E-program**

UNH			UNH+NR001+DELFOR:D:96A:ZZ: EDINE1'	EDIFACT-message type (DELFOR version 96A)
BGM			BGM+241+E99041100011+5+AB'	Message number Acknowledgement required
	DTM		DTM+137:199910291123:203'	Message date and time
	DTM		DTM+163:199910310000:203'	Start time E-program (summertime)
	DTM		DTM+164:199911010100:203'	End time E-program (November 1 <sup>st</sup> 00:00 hrs is represented in summertime)
	DTM		DTM+735:2:805'	UTC offset is 2 hours
	NAD		NAD+PRC+871000112345c::9'	Message from Program
	NAD		NAD+SO+871234500001c::9'	Responsible Company (PV_A)
UNS			UNS+D'	Message to System Operator
	NAD		NAD+PRC+871000200001c::9'	Section separator
		LIN	LIN+1'	Contract party (PV_X)
		QTY	QTY+26E:1482921:KWH'	Quantity in kWh
		DTM	DTM+163:199910310000:203'	Start time period (15 minutes)
		DTM	DTM+164:199910310015:203'	End time period (15 minutes)
		QTY	QTY+26E:1200078:KWH'	Quantity in kWh
		DTM	DTM+163:199910310015:203'	Start time period (15 minutes)
		DTM	DTM+164:199910310030:203'	End time period (15 minutes)
			.....etc etc	Although the time has been put back 1 hour during the night the periods are still represented in summertime
		QTY	QTY+26E:1788611:KWH'	Quantity in kWh
		DTM	DTM+163:199910312345:203'	Start time period (15 minutes)
		DTM	DTM+164:199911010000:203'	End time period (midnight next day)
				Rest of the 15 minute periods of October 31 is still represented in summertime as the next hour of the next day
		QTY	QTY+26E:1600000:KWH'	Quantity in kWh
		DTM	DTM+163:199911010000:203'	Start time period (15 minutes)
		DTM	DTM+164:199911010015:203'	End time period (15 minutes)
			.....etc etc	
		QTY	QTY+26E:1788611:KWH'	Quantity in kWh
		DTM	DTM+163:199911010045:203'	Start time period (15 minutes)
		DTM	DTM+164:199911010100:203'	End time period
	NAD		NAD+PRC+871000300001c::9'	Next Contract party (PV_Y)
		LIN	LIN+1'	
		QTY	QTY+26E:-121200:KWH'	Quantity in kWh
			.....etc etc	

**Example of a T-program as an EDI DELFOR-message****EDIFACT segments DELFOR-bericht****Content and clarification  
T-program**

UNH			UNH+NR001+DELFOR:D:96A:ZZ: EDINE1'	EDIFACT-message type (DELFOR version 96A)
BGM			BGM+241+T99040702+5+AB'	Message (T-program) Message number Acknowledgement required
	DTM		DTM+137:199904071137:203'	Message date
	DTM		DTM+163:199904080000:203'	Start time T-program
	DTM		DTM+164:199904090000:203'	End time T-program
	DTM		DTM+735:2:805'	UTC offset is 2 hours (summertime)
	NAD		NAD+GRU+872000100001c::9'	Message from GRid User (RNB_1)
	NAD		NAD+GRP+871234500001c::9'	Message to GRid Provider (TenneT)
UNS			UNS+D'	Section separator
	NAD		NAD+GC+87123450000001001c::9'	Grid Connection point (PT_A)
	LIN		LIN+1'	
		QTY	QTY+26E:7500:KW'	Quantity in kW
		DTM	DTM+163:199904080000:203'	Start time period (1 hour)
		DTM	DTM+164:199904080100:203'	End time period (1 hour)
		QTY	QTY+26E:33250:KW'	Quantity in kW
		DTM	DTM+163:199904080100:203'	Start time period (1 hour)
		DTM	DTM+164:199904080200:203'	End time period (1 hour)
		QTY	QTY+26E:28250:KW'	Quantity in kW
		DTM	DTM+163:199904080200:203'	Start time period (1 hour)
		DTM	DTM+164:199904080300:203'	End time period (1 hour)
		QTY	QTY+26E:-10250:KW'	Quantity in kW
		DTM	DTM+163:199904080300:203'	Start time period (1 hour)
		DTM	DTM+164:199904080400:203'	End time period (1 hour)
			..... etc etc	
		QTY	QTY+26E:55000:KW'	Quantity in kW
		DTM	DTM+163:199904082200:203'	Start time period (1 hour)
		DTM	DTM+164:199904082300:203'	End time period (1 hour)
		QTY	QTY+26E:29250:KW'	Quantity in kW
		DTM	DTM+163:199904082300:203'	Start time period (1 hour)
		DTM	DTM+164:199904090000:203'	End time period (1 hour)
	NAD		NAD+GC+87123450000001002c::9'	Grid Connection point (PT_B)
	LIN		LIN+1'	
		QTY	QTY+26E:7500:KW'	Quantity in kW
		DTM	DTM+163:199904080000:203'	Start time period (1 hour)
		DTM	DTM+164:199904080100:203'	End time period (1 hour)
		QTY	QTY+26E:33250:KW'	Quantity in kW
		DTM	DTM+163:199904080100:203'	Start time period (1 hour)
		DTM	DTM+164:199904080200:203'	End time period (1 hour)
		QTY	QTY+26E:28250:KW'	Quantity in kW
		DTM	DTM+163:199904080200:203'	Start time period (1 hour)

## EDIFACT segments DELFOR-bericht

Content and clarification  
T-program

	DTM	DTM+164:199904080300:203'	End time period (1 hour)
QTY		QTY+26E:-10250:KW'	Quantity in kW
	DTM	DTM+163:199904080300:203'	Start time period (1 hour)
	DTM	DTM+164:199904080400:203'	End time period (1 hour)
		..... etc etc	
QTY		QTY+26E:55000:KW'	Quantity in kW
	DTM	DTM+163:199904082200:203'	Start time period (1 hour)
	DTM	DTM+164:199904082300:203'	End time period (1 hour)
QTY		QTY+26E:29250:KW'	Quantity in kW
	DTM	DTM+163:199904082300:203'	Start time period (1 hour)
	DTM	DTM+164:199904090000:203'	End time period (1 hour)
NAD		NAD+GC+87123450000001003c::9'	Grid Connection point (PT_C)
LIN		LIN+1'	
	QTY	QTY+26E:7500:KW'	Quantity in kW
	DTM	DTM+163:199904080000:203'	Start time period (1 hour)
	DTM	DTM+164:199904080100:203'	End time period (1 hour)
QTY		QTY+26E:33250:KW'	Quantity in kW
	DTM	DTM+163:199904080100:203'	Start time period (1 hour)
	DTM	DTM+164:199904080200:203'	End time period (1 hour)
QTY		QTY+26E:28250:KW'	Quantity in kW
	DTM	DTM+163:199904080200:203'	Start time period (1 hour)
	DTM	DTM+164:199904080300:203'	End time period (1 hour)
QTY		QTY+26E:-10250:KW'	Quantity in kW
	DTM	DTM+163:199904080300:203'	Start time period (1 hour)
	DTM	DTM+164:199904080400:203'	End time period (1 hour)
		..... etc etc	
	QTY	QTY+26E:55000:KW'	Quantity in kW
	DTM	DTM+163:199904082200:203'	Start time period (1 hour)
	DTM	DTM+164:199904082300:203'	End time period (1 hour)
QTY		QTY+26E:29250:KW'	Quantity in kW
	DTM	DTM+163:199904082300:203'	Start time period (1 hour)
	DTM	DTM+164:199904090000:203'	End time period (1 hour)
UNS		UNS+S'	Section separator
CNT		CNT+1:6264000'	Checksum (total of all quantity values)
UNT		UNT+126+NR001'	Checksum (number of segments in message including UNH and INT)

**Example of a V-program as an EDI DELFOR-message****EDIFACT segments DELFOR-message****Content and clarification  
V-program**

UNH		UNH+NR001+DELFOR:D:96A:ZZ: EDINE1'	EDIFACT-message type (DELFOR version 96A)
BGM		BGM+241+V99041100011+6+AB'	Message number Final approval E-program Acknowledgement required
DTM		DTM+137:199904111402:203'	Message date and time
DTM		DTM+163:199904120000:203'	Start time V-program
DTM		DTM+164:199904130000:203'	End time V-program
DTM		DTM+735:2:805'	UTC offset is 2 hours
RFF		RFF+ALM:E99041100011'	Reference to E-program
NAD		NAD+SO+871234500001c::9'	Message from System Operator
NAD		NAD+PRC+871000112345c::9'	Message to Program Responsible Party (PV_A) From SO to PRC implies V- program
UNS		UNS+D'	Section separator
NAD		NAD+PRC+871000200001c::9'	Contract party (PV_X)
	LIN	LIN+1'	
	QTY	QTY+26E:1482921:KWH'	Quantity in kWh
	DTM	DTM+163:199904120000:203'	Start time period (15 minutes)
	DTM	DTM+164:199904120015:203'	End time period (15 minutes)
	QTY	QTY+26E:1200078:KWH'	Quantity in kWh
	DTM	DTM+163:199904120015:203'	Start time period (15 minutes)
	DTM	DTM+164:199904120030:203'	End time period (15 minutes)
	QTY	QTY+26E:1093889:KWH'	Quantity in kWh
	DTM	DTM+163:199904120030:203'	Start time period (15 minutes)
	DTM	DTM+164:199904120045:203'	End time period (15 minutes)
	QTY	QTY+26E:1061099:KWH'	Quantity in kWh
	DTM	DTM+163:199904120045:203'	Start time period (15 minutes)
	DTM	DTM+164:199904120100:203'	End time period (15 minutes)
	QTY	QTY+26E:1043251:KWH'	Quantity in kWh
	DTM	DTM+163:199904120100:203'	Start time period (15 minutes)
	DTM	DTM+164:199904120115:203'	End time period (15 minutes)
		.....etc etc	
	QTY	QTY+26E:1788611:KWH'	Quantity in kWh
	DTM	DTM+163:199904122345:203'	Start time period (15 minutes)
	DTM	DTM+164:199904130000:203'	End time period (midnight next day)
NAD		NAD+PRC+871000300001c::9'	Next Contract party (PV_Y)
	LIN	LIN+1'	
	QTY	QTY+26E:-121200:KWH'	Quantity in kWh
	DTM	DTM+163:199904120000:203'	Start time period (15 minutes)
	DTM	DTM+164:199904120015:203'	End time period (15 minutes)
	QTY	QTY+26E:-62000:KWH'	Quantity in kWh
	DTM	DTM+163:199904120015:203'	Start time period (15 minutes)
	DTM	DTM+164:199904120030:203'	End time period (15 minutes)
	QTY	QTY+26E:-37500:KWH'	Quantity in kWh
	DTM	DTM+163:199904120030:203'	Start time period (15 minutes)

## EDIFACT segments DELFOR-message

Content and clarification  
V-program

		DTM	DTM+164:199904120045:203'	End time period (15 minutes)
	QTY		QTY+26E:-32300:KWH'	Quantity in kWh
		DTM	DTM+163:199904120045:203'	Start time period (15 minutes)
		DTM	DTM+164:199904120100:203'	End time period (15 minutes)
	QTY		QTY+26E:-20700:KWH'	Quantity in kWh
		DTM	DTM+163:199904120100:203'	Start time period (15 minutes)
		DTM	DTM+164:199904120115:203'	End time period (15 minutes)
			.....etc etc	
	QTY		QTY+26E:-123000:KWH'	Quantity in kWh
		DTM	DTM+163:199904122345:203'	Start time period (15 minutes)
		DTM	DTM+164:199904130000:203'	End time period (midnight next day)
NAD			NAD+PRC+871000400001c::9'	Contract party (PV_Z)
	LIN		LIN+1'	
	QTY		QTY+26E:-50363:KWH'	Quantity in kWh
		DTM	DTM+163:199904120000:203'	Start time period (15 minutes)
		DTM	DTM+164:199904120015:203'	End time period (15 minutes)
	QTY		QTY+26E:-44846:KWH'	Quantity in kWh
		DTM	DTM+163:199904120015:203'	Start time period (15 minutes)
		DTM	DTM+164:199904120030:203'	End time period (15 minutes)
	QTY		QTY+26E:-42269:KWH'	Quantity in kWh
		DTM	DTM+163:199904120030:203'	Start time period (15 minutes)
		DTM	DTM+164:199904120045:203'	End time period (15 minutes)
	QTY		QTY+26E:-41977:KWH'	Quantity in kWh
		DTM	DTM+163:199904120045:203'	Start time period (15 minutes)
		DTM	DTM+164:199904120100:203'	End time period (15 minutes)
	QTY		QTY+26E:-42757:KWH'	Quantity in kWh
		DTM	DTM+163:199904120100:203'	Start time period (15 minutes)
		DTM	DTM+164:199904120115:203'	End time period (15 minutes)
			.....etc etc	
	QTY		QTY+26E:-50803:KWH'	Quantity in kWh
		DTM	DTM+163:199904122345:203'	Start time period (15 minutes)
		DTM	DTM+164:199904130000:203'	End time period (midnight next day)
				Following segments represent an IET specification
NAD			NAD+PRC+544000100001c::9'	Foreign contract partner / buyer (FP_A)
	LIN		LIN+1'	
				Note that ALLI segment is not used, because of exports
	LOC		LOC+17+871234500000000001c::9'	Border station BE-ZVL
	RFF		RFF+CT:E001'	IET contract number
	QTY		QTY+26E:-30900:KWH'	Quantity in kWh
		DTM	DTM+163:199904120000:203'	Start time period (15 minutes)
		DTM	DTM+164:199904120015:203'	End time period (15 minutes)
	QTY		QTY+26E:-37300:KWH'	Quantity in kWh
		DTM	DTM+163:199904120015:203'	Start time period (15 minutes)
		DTM	DTM+164:199904120030:203'	End time period (15 minutes)
	QTY		QTY+26E:-41100:KWH'	Quantity in kWh
		DTM	DTM+163:199904120030:203'	Start time period (15 minutes)
		DTM	DTM+164:199904120045:203'	End time period (15 minutes)
	QTY		QTY+26E:-43600:KWH'	Quantity in kWh
		DTM	DTM+163:199904120045:203'	Start time period (15 minutes)

## EDIFACT segments DELFOR-message

Content and clarification  
V-program

	DTM	DTM+164:199904120100:203'	End time period (15 minutes)
QTY		QTY+26E:-43600:KWH'	Quantity in kWh
	DTM	DTM+163:199904120100:203'	Start time period (15 minutes)
	DTM	DTM+164:199904120115:203'	End time period (15 minutes)
		.....etc etc	
QTY		QTY+26E:-29000:KWH'	Quantity in kWh
	DTM	DTM+163:199904122345:203'	Start time period (15 minutes)
	DTM	DTM+164:199904130000:203'	End time period (midnight next day)
NAD		NAD+PRC+403000100001c::9'	Foreign contract party / supplier (FP_B)
LIN		LIN+1'	
	ALI	ALI+DE'	Country of origin (Germany)
	LOC	LOC+17+87123450000000011c::9'	Border station DE-MBT
	RFF	RFF+CT:I001	IET contract number
	QTY	QTY+26E:132700:KWH'	Quantity in kWh
	DTM	DTM+163:199904120000:203'	Start time period (15 minutes)
	DTM	DTM+164:199904120015:203'	End time period (15 minutes)
QTY		QTY+26E:105300:KWH'	Quantity in kWh
	DTM	DTM+163:199904120015:203'	Start time period (15 minutes)
	DTM	DTM+164:199904120030:203'	End time period (15 minutes)
QTY		QTY+26E:88600:KWH'	Quantity in kWh
	DTM	DTM+163:199904120030:203'	Start time period (15 minutes)
	DTM	DTM+164:199904120045:203'	End time period (15 minutes)
QTY		QTY+26E:77900:KWH'	Quantity in kWh
	DTM	DTM+163:199904120045:203'	Start time period (15 minutes)
	DTM	DTM+164:199904120100:203'	End time period (15 minutes)
QTY		QTY+26E:77900:KWH'	Quantity in kWh
	DTM	DTM+163:199904120100:203'	Start time period (15 minutes)
	DTM	DTM+164:199904120115:203'	End time period (15 minutes)
		.....etc etc	
QTY		QTY+26E:139700:KWH'	Quantity in kWh
	DTM	DTM+163:199904122345:203'	Start time period (15 minutes)
	DTM	DTM+164:199904130000:203'	End time period (midnight next day)
UNS		UNS+S'	Section separator
CNT		CNT+1:-53922198'	Checksum (total of all quantity values)
UNT		UNT+208+NR001'	Checksum (number of segments in message including UNH en UNT)

**Example of a TC-program (daily) as an EDI DELFOR-message**

EDIFACT segments DELFOR-message		Content and clarification TC-program
UNH	UNH+NR001+DELFOR:D:96A:ZZ: EDINE1'	EDIFACT-message type (DELFOR version 96A)
BGM	BGM+241+TC99041100011+5+AB'	Message number Acknowledgement required
DTM	DTM+137:199904111402:203'	Message date and time
DTM	DTM+163:199904120000:203'	Start time TC-program
DTM	DTM+164:199904130000:203'	End time TC-program
DTM	DTM+735:2:805'	UTC offset is 2 hours
RFF	RFF+BD:QTTC199904110953002'	Bid number (QUOTES)
NAD	NAD+GRP+871234500001c::9'	Message from Grid Provider
NAD	NAD+PRC+871000112345c::9'	Message to Program Responsible Company
UNS	UNS+D'	Section separator
NAD	NAD+GRP+401234500001c::9'	Grid Provider on the other side of the border
LIN	LIN+1'	
LOC	LOC+47+87123450000000011c::9'	Net area destination (sink)
LOC	LOC+48+40123450000000011c::9'	Net area origin (source)
RFF	RFF+CT:E001'	Contract number
QTY	QTY+66:1482921:MAW'	Quantity in MW
DTM	DTM+163:199904120000:203'	Start time period (1 hour)
DTM	DTM+164:199904120100:203'	End time period (1 hour)
QTY	QTY+66:1200078:MAW'	Quantity in MW
DTM	DTM+163:199904120100:203'	Start time period (1 hour)
DTM	DTM+164:199904120200:203'	End time period (1 hour)
QTY	QTY+66:1093889:MAW'	Quantity in MW
DTM	DTM+163:199904120200:203'	Start time period (1 hour)
DTM	DTM+164:199904120300:203'	End time period (1 hour)
QTY	QTY+66:1061099:MAW'	Quantity in MW
DTM	DTM+163:199904120300:203'	Start time period (1 hour)
DTM	DTM+164:199904120400:203'	End time period (1 hour)
QTY	QTY+66:1043251:MAW'	Quantity in MW
DTM	DTM+163:199904120400:203'	Start time period (1 hour)
DTM	DTM+164:199904120500:203'	End time period (1 hour)
	.....etc etc	
QTY	QTY+66:1788611:MAW'	Quantity in MW
DTM	DTM+163:199904122300:203'	Start time period (1 hour)
DTM	DTM+164:199904130000:203'	End time period (midnight next day)
LIN	LIN+2'	
LOC	LOC+47+40123450000000011c::9'	Net area destination (sink)
LOC	LOC+48+87123450000000011c::9'	Net area origin (source)
RFF	RFF+CT:E004'	Contract number
QTY	QTY+66:1482921:MAW'	Quantity in MW
DTM	DTM+163:199904120000:203'	Start time period (1 hour)
DTM	DTM+164:199904120100:203'	End time period (1 hour)
QTY	QTY+66:0:MAW'	Quantity in MW

## EDIFACT segments DELFOR-message

Content and clarification  
TC-program

	DTM	DTM+163:199904120100:203'	Start time period (1 hour)
	DTM	DTM+164:199904120200:203'	End time period (1 hour)
QTY		QTY+66:0:MAW'	Quantity in MW
	DTM	DTM+163:199904120200:203'	Start time period (1 hour)
	DTM	DTM+164:199904120300:203'	End time period (1 hour)
QTY		QTY+66:0:MAW'	Quantity in MW
	DTM	DTM+163:199904120300:203'	Start time period (1 hour)
	DTM	DTM+164:199904120400:203'	End time period (1 hour)
QTY		QTY+66:0:MAW'	Quantity in MW
	DTM	DTM+163:199904120400:203'	Start time period (1 hour)
	DTM	DTM+164:199904120500:203'	End time period (1 hour)
		.....etc etc	
QTY		QTY+66:100:MAW'	Quantity in MW
	DTM	DTM+163:199904122300:203'	Start time period (1 hour)
	DTM	DTM+164:199904130000:203'	End time period (midnight next day)
NAD		NAD+GRP+541234500001c::9'	Grid Provider on the other side of the border
LIN		LIN+1'	
	LOC	LOC+47+87123450000000011c::9'	Net area destination (sink)
	LOC	LOC+48+54123450000000011c::9'	Net area origin (source)
	RFF	RFF+CT:E002'	Contract number
QTY		QTY+66:121200:MAW'	Quantity in MW
	DTM	DTM+163:199904120000:203'	Start time period (1 hour)
	DTM	DTM+164:199904120100:203'	End time period (1 hour)
QTY		QTY+66:62000:MAW'	Quantity in MW
	DTM	DTM+163:199904120100:203'	Start time period (1 hour)
	DTM	DTM+164:199904120200:203'	End time period (1 hour)
QTY		QTY+66:37500:MAW'	Quantity in MW
	DTM	DTM+163:199904120200:203'	Start time period (1 hour)
	DTM	DTM+164:199904120300:203'	End time period (1 hour)
QTY		QTY+66:32300:MAW'	Quantity in MW
	DTM	DTM+163:199904120300:203'	Start time period (1 hour)
	DTM	DTM+164:199904120400:203'	End time period (1 hour)
QTY		QTY+66:20700:MAW'	Quantity in MW
	DTM	DTM+163:199904120400:203'	Start time period (1 hour)
	DTM	DTM+164:199904120500:203'	End time period (1 hour)
		.....etc etc	
QTY		QTY+66:123000:MAW'	Quantity in MW
	DTM	DTM+163:199904122300:203'	Start time period (1 hour)
	DTM	DTM+164:199904130000:203'	End time period (midnight next day)
LIN		LIN+2'	
	LOC	LOC+47+54123450000000011c::9'	Net area destination (sink)
	LOC	LOC+48+87123450000000011c::9'	Net area origin (source)
	RFF	RFF+CT:E003'	Contract number
QTY		QTY+66:1482921:MAW'	Quantity in MW
	DTM	DTM+163:199904120000:203'	Start time period (1 hour)
	DTM	DTM+164:199904120100:203'	End time period (1 hour)
QTY		QTY+66:0:MAW'	Quantity in MW
	DTM	DTM+163:199904120100:203'	Start time period (1 hour)
	DTM	DTM+164:199904120200:203'	End time period (1 hour)
QTY		QTY+66:0:MAW'	Quantity in MW
	DTM	DTM+163:199904120200:203'	Start time period (1 hour)

## EDIFACT segments DELFOR-message

Content and clarification  
TC-program

	DTM	DTM+164:199904120300:203'	End time period (1 hour)
QTY		QTY+66:0:MAW'	Quantity in MW
	DTM	DTM+163:199904120300:203'	Start time period (1 hour)
	DTM	DTM+164:199904120400:203'	End time period (1 hour)
QTY		QTY+66:0:MAW'	Quantity in MW
	DTM	DTM+163:199904120400:203'	Start time period (1 hour)
	DTM	DTM+164:199904120500:203'	End time period (1 hour)
		.....etc etc	
QTY		QTY+66:200:MAW'	Quantity in MW
	DTM	DTM+163:199904122300:203'	Start time period (1 hour)
	DTM	DTM+164:199904130000:203'	End time period (midnight next day)
UNS		UNS+S'	Section separator
	CNT	CNT+1:- 12345678'	Checksum (total of all quantity values)
UNT		UNT+ 123+NR001'	Checksum (number of segments in message including UNH en UNT)

**Example of a TC-program (monthly) as an EDI DELFOR-message**

EDIFACT segments DELFOR-message			Content and clarification TC-program
UNH		UNH+NR001+DELFOR:D:96A:ZZ: EDINE1'	EDIFACT-message type (DELFOR version 96A)
BGM		BGM+241+TC99041100011+5+AB'	Message number Acknowledgement required
	DTM	DTM+137:199904111402:203'	Message date and time
	DTM	DTM+163:199905010000:203'	Start time TC-program
	DTM	DTM+164:199906010000:203'	End time TC-program
	DTM	DTM+735:2:805'	UTC offset is 2 hours
	RFF	RFF+BD:QTTC199904110953002'	Bid number (QUOTES)
	NAD	NAD+GRP+871234500001c::9'	Message from Grid Provider
	NAD	NAD+PRC+871000112345c::9'	Message to Program Responsible Company
UNS		UNS+D'	Section separator
	NAD	NAD+GRP+401234500001c::9'	Grid Provider on the other side of the border
	LIN	LIN+1'	
	LOC	LOC+47+87123450000000011c::9'	Net area destination (sink)
	LOC	LOC+48+40123450000000011c::9'	Net area origin (source)
	RFF	RFF+CT:E001'	Contract number
	QTY	QTY+66:200000:MAW'	Quantity in MW
	DTM	DTM+163:199905010000:203'	Start time period (1rst day of the month)
	DTM	DTM+164:199906010000:203'	End time period (1rst day of the next month)
	LIN	LIN+2'	
	LOC	LOC+47+40123450000000011c::9'	Net area destination (sink)
	LOC	LOC+48+87123450000000011c::9'	Net area origin (source)
	RFF	RFF+CT:E004'	Contract number
	QTY	QTY+66:150000:MAW'	Quantity in MW
	DTM	DTM+163:199905010000:203'	Start time period (1rst day of the month)
	DTM	DTM+164:199906010000:203'	End time period (1rst day of the next month)
	NAD	NAD+GRP+541234500001c::9'	Grid Provider on the other side of the border
	LIN	LIN+1'	
	LOC	LOC+47+87123450000000011c::9'	Net area destination (sink)
	LOC	LOC+48+54123450000000011c::9'	Net area origin (source)
	RFF	RFF+CT:E002'	Contract number
	QTY	QTY+66:100000:MAW'	Quantity in MW
	DTM	DTM+163:199905010000:203'	Start time period (1rst day of the month)
	DTM	DTM+164:199906010000:203'	End time period (1rst day of the next month)
	LIN	LIN+2'	
	LOC	LOC+47+54123450000000011c::9'	Net area destination (sink)
	LOC	LOC+48+87123450000000011c::9'	Net area origin (source)

**EDIFACT segments DELFOR-message**

<b>EDIFACT segments DELFOR-message</b>		<b>Content and clarification TC-program</b>
	RFF	RFF+CT:E003'
	QTY	QTY+66:50000:MAW'
	DTM	DTM+163:199905010000:203'
	DTM	DTM+164:199906010000:203'
UNS		UNS+S'
	CNT	CNT+1:- 12345678'
UNT		UNT+123+NR001'
		Contract number
		Quantity in MW
		Start time period (1rst day of the month)
		End time period (1rst day of the next month)
		Section separator
		Checksum (total of all quantity values)
		Checksum (number of segments in message including UNH en UNT)

**Example of a TC-program (yearly) as an EDI DELFOR-message**

EDIFACT segments DELFOR-message			Content and clarification TC-program
UNH		UNH+NR001+DELFOR:D:96A:ZZ: EDINE1'	EDIFACT-message type (DELFOR version 96A)
BGM		BGM+241+TC99041100011+5+AB'	Message number Acknowledgement required
	DTM	DTM+137:200111111402:203'	Message date and time
	DTM	DTM+163:200101010000:203'	Start time TC-program
	DTM	DTM+164:200201010000:203'	End time TC-program
	DTM	DTM+735:1:805'	UTC offset is 1 hours
	RFF	RFF+BD:QTTC199904110953002'	Bid number (QUOTES)
	NAD	NAD+GRP+871234500001c::9'	Message from Grid Provider
	NAD	NAD+PRC+871000112345c::9'	Message to Program Responsible Company
UNS		UNS+D'	Section separator
	NAD	NAD+GRP+401234500001c::9'	Grid Provider on the other side of the border
	LIN	LIN+1'	
	LOC	LOC+47+87123450000000011c::9'	Net area destination (sink)
	LOC	LOC+48+40123450000000011c::9'	Net area origin (source)
	RFF	RFF+CT:E001'	Contract number
	QTY	QTY+66:200000:MAW'	Quantity in MW
	DTM	DTM+163:200101010000:203'	Start time period (1rst day of the next year)
	DTM	DTM+164:200201010000:203'	End time period (1rst day of the year thereafter)
	LIN	LIN+2'	
	LOC	LOC+47+40123450000000011c::9'	Net area destination (sink)
	LOC	LOC+48+87123450000000011c::9'	Net area origin (source)
	RFF	RFF+CT:E004'	Contract number
	QTY	QTY+66:150000:MAW'	Quantity in MW
	DTM	DTM+163:200101010000:203'	Start time period (1rst day of the next year)
	DTM	DTM+164:200201010000:203'	End time period (1rst day of the year thereafter)
	NAD	NAD+GRP+541234500001c::9'	Grid Provider on the other side of the border
	LIN	LIN+1'	
	LOC	LOC+47+87123450000000011c::9'	Net area destination (sink)
	LOC	LOC+48+54123450000000011c::9'	Net area origin (source)
	RFF	RFF+CT:E002'	Contract number
	QTY	QTY+66:100000:MAW'	Quantity in MW
	DTM	DTM+163:200101010000:203'	Start time period (1rst day of the next year)
	DTM	DTM+164:200201010000:203'	End time period (1rst day of the year thereafter)
	LIN	LIN+2'	
	LOC	LOC+47+54123450000000011c::9'	Net area destination (sink)
	LOC	LOC+48+87123450000000011c::9'	Net area origin (source)

**EDIFACT segments DELFOR-message**

	RFF	RFF+CT:E003'
	QTY	QTY+66:50000:MAW'
	DTM	DTM+163:200101010000:203'
	DTM	DTM+164:200201010000:203'
UNS		UNS+S'
	CNT	CNT+1:- 12345678'
UNT		UNT+123+NR001'

**Content and clarification  
TC-program**

Contract number  
Quantity in MW  
Start time period (1rst day of the next year)  
End time period (1rst day of the year thereafter)  
Section separator  
  
Checksum (total of all quantity values)  
Checksum (number of segments in message including UNH en UNT)

**Example of an E-program SST as an EDI DELFOR-message (from the active party)**

**EDIFACT segments DELFOR-message**

**Content and clarification  
E-program SST**

UNH			UNH+NR001+DELFOR:D:96A:ZZ: EDINE1'	EDIFACT-message type (DELFOR version 96A)
BGM			BGM+E17::260+E99041100011+2+ AB'	Message type (E17 + Ediel code 260) + message number + code for d-update. Acknowledgement required
	DTM		DTM+164:199904130000:203'	End time E-program
	DTM		DTM+137:199904111402:203'	Message date and time
	DTM		DTM+163:199904120000:203'	Start time E-program
	DTM		DTM+735:2:805'	UTC offset is 2 hours
	NAD		NAD+SO+871234500001c::9'	Message to System Operator (From PRC to SO implies E- program)
	NAD		NAD+PRC+871000112345c::9'	Message from Program Responsible Company (PV_A)
UNS			UNS+D'	Section separator
	NAD		NAD+PRC+871000200001c::9'	Contract party (PV_X)
	LIN		LIN+1'	
		QTY	QTY+26E:-100:KWH'	Quantity in kWh
		DTM	DTM+163:199904120045:203'	Start time period (15 minutes)
		DTM	DTM+164:199904120100:203'	End time period (15 minutes)
		QTY	QTY+26E:100:KWH'	Quantity in kWh
		DTM	DTM+163:199904120100:203'	Start time period (15 minutes)
		DTM	DTM+164:199904120115:203'	End time period (15 minutes)
		QTY	QTY+26E:100:KWH'	Quantity in kWh
		DTM	DTM+163:199904122345:203'	Start time period (15 minutes)
		DTM	DTM+164:199904130000:203'	End time period (midnight next day)
	NAD		NAD+PRC+871000300001c::9'	Next Contract party (PV_Y)
	LIN		LIN+1'	
		QTY	QTY+26E:-1000:KWH'	Quantity in kWh
		DTM	DTM+163:199904122200:203'	Start time period (15 minutes)
		DTM	DTM+164:199904122215:203'	End time period (15 minutes)
		QTY	QTY+26E:-6200:KWH'	Quantity in kWh
		DTM	DTM+163:199904122215:203'	Start time period (15 minutes)
		DTM	DTM+164:199904122230:203'	End time period (15 minutes)
		QTY	QTY+26E:-3750:KWH'	Quantity in kWh
		DTM	DTM+163:199904122330:203'	Start time period (15 minutes)
		DTM	DTM+164:199904122345:203'	End time period (15 minutes)
		QTY	QTY+26E:-32300:KWH'	Quantity in kWh
		DTM	DTM+163:199904122345:203'	Start time period (15 minutes)
		DTM	DTM+164:199904120000:203'	End time period (15 minutes)
	NAD		NAD+PRC+871000400001c::9'	Contract party (PV_Z)
	LIN		LIN+1'	
		QTY	QTY+26E:-500:KWH'	Quantity in kWh
		DTM	DTM+163:199904120000:203'	Start time period (15 minutes)
		DTM	DTM+164:199904120015:203'	End time period (15 minutes)

## EDIFACT segments DELFOR-message

	QTY	QTY+26E:-400:KWH'	<b>Content and clarification</b>
	DTM	DTM+163:199904120015:203'	<b>E-program SST</b>
	DTM	DTM+164:199904120030:203'	Quantity in kWh
	QTY	QTY+26E:-400:KWH'	Start time period (15 minutes)
	DTM	DTM+163:199904120030:203'	End time period (15 minutes)
	DTM	DTM+164:199904120045:203'	Quantity in kWh
UNS		UNS+S'	Start time period (15 minutes)
			End time period (15 minutes)
			Section separator
	CNT	CNT+1:-123456'	Checksum (total of all quantity values) <sup>2</sup>
			Checksum (number of segments in message including UNH en UNT)
UNT		UNT+123+NR001'	

<sup>2</sup> In the examples to the MIG's all checksums are to be regarded as imaginary numbers and not as an exact count of numbers or values in the example.

**Example of an V-program SST as an EDI DELFOR-message (to the active party)**

**EDIFACT segments DELFOR-message**

**Content and clarification  
V-program SST**

UNH			UNH+NR001+DELFOR:D:96A:ZZ: EDINE1'	EDIFACT-message type (DELFOR version 96A)
BGM			BGM+E18::260+V9904110032+2+ AB'	Message type (E18 + Ediel- code 260) + message number + code for d-update. Acknowledgement required UTC offset is 2 hours
	DTM		DTM+735:2:805'	Start time V-program
	DTM		DTM+163:199904120000:203'	End time V-program
	DTM		DTM+164:199904130000:203'	Message date and time
	DTM		DTM+137:199904111411:203'	Reference to E-program SST
	RFF		RFF+ALM:E99041100011'	Message to Program
	NAD		NAD+PRC+871000112345c::9'	Responsible Company (PV_A)
	NAD		NAD+SO+871234500001c::9'	Message from System Operator (From So to PRC implies V- program)
UNS			UNS+D'	Section separator
	NAD		NAD+PRC+871000200001c::9'	Contract party (PV_X)
	LIN		LIN+1'	
		QTY	QTY+26E:-100:KWH'	Quantity in kWh
		DTM	DTM+163:199904120045:203'	Start time period (15 minutes)
		DTM	DTM+164:199904120100:203'	End time period (15 minutes)
		QTY	QTY+26E:100:KWH'	Quantity in kWh
		DTM	DTM+163:199904120100:203'	Start time period (15 minutes)
		DTM	DTM+164:199904120115:203'	End time period (15 minutes)
		QTY	QTY+26E:100:KWH'	Quantity in kWh
		DTM	DTM+163:199904122345:203'	Start time period (15 minutes)
		DTM	DTM+164:199904130000:203'	End time period (midnight next day)
	NAD		NAD+PRC+871000300001c::9'	Next Contract party (PV_Y)
	LIN		LIN+1'	
		QTY	QTY+26E:-1000:KWH'	Quantity in kWh
		DTM	DTM+163:199904122200:203'	Start time period (15 minutes)
		DTM	DTM+164:199904122215:203'	End time period (15 minutes)
		QTY	QTY+26E:-6200:KWH'	Quantity in kWh
		DTM	DTM+163:199904122215:203'	Start time period (15 minutes)
		DTM	DTM+164:199904122230:203'	End time period (15 minutes)
		QTY	QTY+26E:-3750:KWH'	Quantity in kWh
		DTM	DTM+163:199904122330:203'	Start time period (15 minutes)
		DTM	DTM+164:199904122345:203'	End time period (15 minutes)
		QTY	QTY+26E:-32300:KWH'	Quantity in kWh
		DTM	DTM+163:199904122345:203'	Start time period (15 minutes)
		DTM	DTM+164:199904120000:203'	End time period (15 minutes)
	NAD		NAD+PRC+871000400001c::9'	Contract party (PV_Z)
	LIN		LIN+1'	
		QTY	QTY+26E:-500:KWH'	Quantity in kWh

## EDIFACT segments DELFOR-message

EDIFACT segments DELFOR-message		Content and clarification
	DTM	DTM+163:199904120000:203'
	DTM	DTM+164:199904120015:203'
QTY		QTY+26E:-400:KWH'
	DTM	DTM+163:199904120015:203'
	DTM	DTM+164:199904120030:203'
QTY		QTY+26E:-400:KWH'
	DTM	DTM+163:199904120030:203'
	DTM	DTM+164:199904120045:203'
UNS		UNS+S'
	CNT	CNT+1:-123456'
UNT		UNT+123+NR001'
		Start time period (15 minutes)
		End time period (15 minutes)
		Quantity in kWh
		Start time period (15 minutes)
		End time period (15 minutes)
		Quantity in kWh
		Start time period (15 minutes)
		End time period (15 minutes)
		Section separator
		Checksum (total of all quantity values) <sup>3</sup>
		Checksum (number of segments in message including UNH en UNT)

<sup>3</sup> In the examples to the MIG's all checksums are to be regarded as imaginary numbers and not as an exact count of numbers or values in the example.

**Example of an V-program SST as an EDI DELFOR-message (to - one of - the inactive party's)**

EDIFACT segments DELFOR-message		Content and clarification V-program SST
UNH	UNH+NR001+DELFOR:D:96A:ZZ:EDINE1'	EDIFACT-message type (DELFOR version 96A)
BGM	BGM+E18::260+V9904110033+2+AB'	Message type (E18 + Ediel-code 260) + message number + code for d-update. Acknowledgement required
DTM	DTM+735:2:805'	UTC offset is 2 hours
DTM	DTM+163:199904120000:203'	Start time V-program
DTM	DTM+164:199904130000:203'	End time V-program
DTM	DTM+137:199904111412:203'	Message date and time
NAD	NAD+PRC+871000200001c::9'	Message to Program Responsible Company (PV_X)
NAD	NAD+SO+871234500001c::9'	Message from System Operator (From So to PRC implies V-program)
UNS	UNS+D'	Section separator
NAD	NAD+PRC+871000112345c::9'	Contract party (PV_A)
LIN	LIN+1'	
RFF	RFF+ALM:E99041100011'	Reference to E-program SST from active party
QTY	QTY+26E:100:KWH'	Quantity in kWh
DTM	DTM+163:199904120045:203'	Start time period (15 minutes)
DTM	DTM+164:199904120100:203'	End time period (15 minutes)
QTY	QTY+26E:-100:KWH'	Quantity in kWh
DTM	DTM+163:199904120100:203'	Start time period (15 minutes)
DTM	DTM+164:199904120115:203'	End time period (15 minutes)
QTY	QTY+26E:-100:KWH'	Quantity in kWh
DTM	DTM+163:199904122345:203'	Start time period (15 minutes)
DTM	DTM+164:199904130000:203'	End time period (midnight next day)
UNS	UNS+S'	Section separator
CNT	CNT+1:-123456'	Checksum (total of all quantity values) <sup>4</sup>
UNT	UNT+123+NR001'	Checksum (number of segments in message including UNH en UNT)

<sup>4</sup> In the examples to the MIG's all checksums are to be regarded as imaginary numbers and not as an exact count of numbers or values in the example.